
Lightweight



Introduction and Applications

Frank Wegmann, March 13, 2024

Boston DITA User's Group



Agenda

Introduction

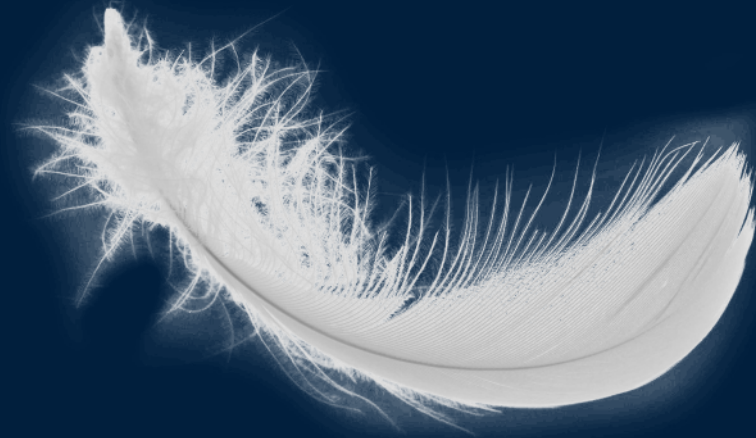
Authoring formats

Examples

Applications (at Software AG)



Introduction



What is Lightweight DITA about?

- It is DITA, but way simpler
- Smaller feature set
- Significantly reduced set of elements and attributes
- It goes beyond XML as the only authoring format
- It helps crossing silo boundaries in enterprises
- LwDITA does not replace DITA, it complements it



What is Lightweight DITA about?

It's all about simplicity and interoperability...



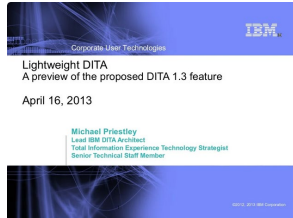
Lightweight DITA is an OASIS story

- Originated in discussions on DITA 1.3
- A subcommittee of the DITA TC was created to foster work on LwDITA
 - Chaired by Michael Priestley (formerly IBM, now Avalara) from the very beginning
 - Long-time co-chair Carlos Evia (Virginia Tech) until 2021
 - Current co-chair Frank Wegmann (Software AG)
- Objective is to develop a specification for Lightweight DITA



OASIS work timeline

...well, most of it...



(Apr 16) Preview of LwDITA as DITA 1.3 feature (presentation by Michael Priestley, IBM) [2]



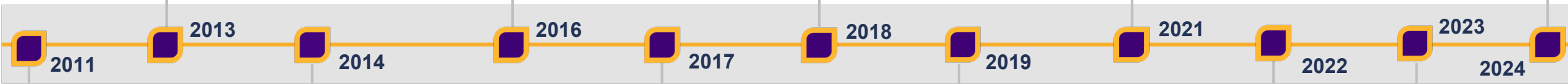
(Dec 6) First working draft of the Committee Note 01 (Lightweight DITA: An Introduction)



(Oct 30) Final version of the Committee note 02 [4]



New spec drafts soon



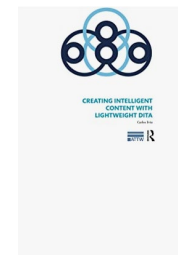
(Apr 4) First thoughts by Don Day [1]

(Sep 15) Kick-off meeting of the Lightweight DITA SC [3]

(Oct 27) First version of LwDITA grammar files

(Oct 30) Opening of the official dita-lwdita repo on GitHub

(Dec 7, 2018) First book on LwDITA by Carlos Evia [5]

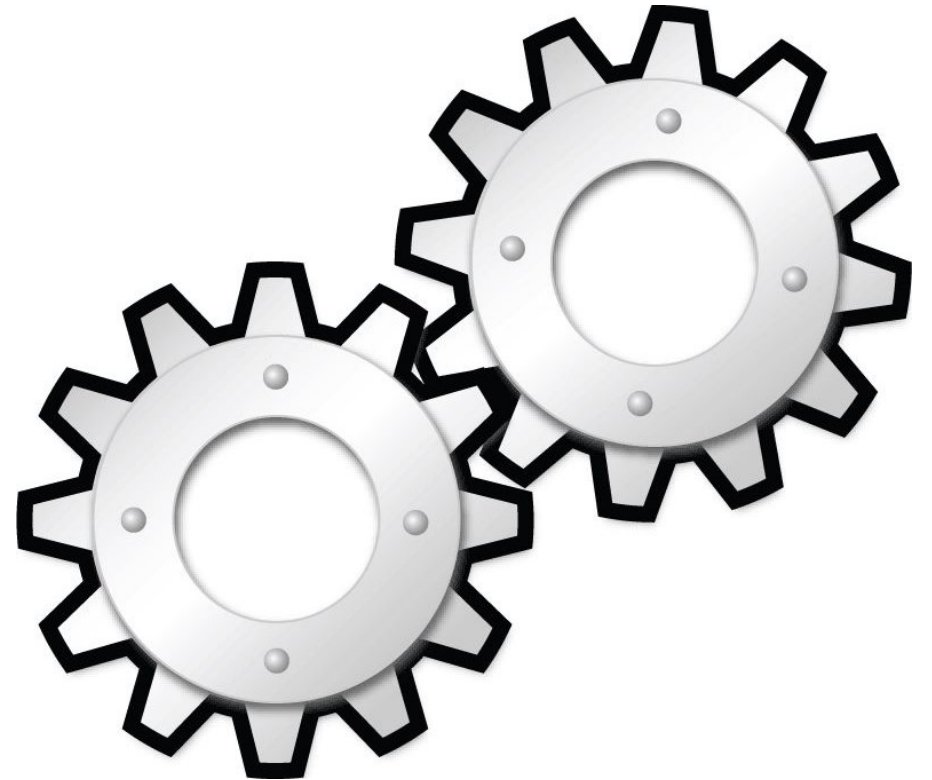


(Apr 25) LwDITA test suite #2 (by Stan Doherty)

- XDITA plugin 0.3.0
- LwDITA plugin 5.x [9]

Lightweight DITA is gaining traction

- Authoring tools
 - oXygen XML Editor/Author
 - Simply XML
 - DITA-FMx plugin for Adobe FrameMaker
 - Adobe Experience Manager Web editor
 - *Adobe RoboHelp (internally)*
- Publishing tools
 - DITA-OT
 - XML Mind DITA Converter
 - Adobe Experience Manager





What?
<table>



LwDITA Authoring Formats

- Lightweight DITA specifies an architecture that provides mappings between different authoring formats
- Currently these are:
 - XDITA (based on DITA XML)
 - MDITA (based on Markdown, with two different *profiles*)
 - HDITA (based on HTML5)
- In principle, Lightweight DITA is open to other formats as well (for example JSON)



LwDITA Features

- Across different authoring formats, it offers the following reuse mechanisms:
 - Content references (for block-level content, except MDITA core profile)
 - Key references (for phrase-level content)
 - Conditional processing (except MDITA core profile)
- Designed to allow specialization to varying degree depending on authoring format
- Enable authoring, collaboration and publishing across all LwDITA authoring formats and full DITA



LwDITA Maps

- Aggregate and order topics
- Simplified map concept (no bookmaps, no mapref)
- Reduced set of metadata
- Key definitions
- References to topics in these authoring formats:

Authoring Format	@format value
"full" DITA	dita
XDITA	dita
HDITA	hdita
MDITA (all profiles)	mdita
Markdown	markdown

```
<?xml version="1.0" encoding="UTF-8"?>
<!DOCTYPE map PUBLIC "-//OASIS//DTD LIGHTWEIGHT DITA Map//EN" "lw-map.dtd">
<map id="rlnmap">
  <topicmeta>
    <navtitle>Remote Lighting Network</navtitle>
  </topicmeta>

  <keydef keys="product-name">
    <topicmeta>
      <linktext>Remote Lighting Network</linktext>
    </topicmeta>
  </keydef>

  <topicref href="xdita/intro-product.dita" format="dita"/>
  <topicref href="hdita/intro-network-lighting.html" format="hdita"/>
  <topicref href="mdita/remote-components.md" format="mdita"/>
  <topicref href="xdita/max-number-bulbs.dita" format="dita"/>
  <topicref href="hdita/low-power.html" format="hdita"/>
  <topicref href="hdita/considerations.html" format="hdita"/>
  <topicref href="xdita/program-bulbs-to-groups.dita" format="dita"/>
  <topicref href="dita/turn-on-off-dim-lights.dita" format="dita"/>
  <topicref href="mdita/product-specs.md" format="mdita">
    <topicref href="xdita/remote-specs.dita" format="dita"/>
    <topicref href="mdita/led-specs.md" format="mdita"/>
  </topicref>
</map>
```

LwDITA map identifier (points to `<map id="rlnmap">`)

Key definition (points to `<keydef keys="product-name">`)

Reference to HDITA topic (points to `<topicref href="hdita/intro-network-lighting.html" format="hdita"/>`)

Reference to MDITA topic (points to `<topicref href="mdita/product-specs.md" format="mdita">`)

References to XDITA and full DITA (points to `<topicref href="xdita/intro-product.dita" format="dita"/>`, `<topicref href="xdita/max-number-bulbs.dita" format="dita"/>`, and `<topicref href="xdita/remote-specs.dita" format="dita"/>`)

XDITA

- XML authoring format
- Subset of full DITA, without all its wrinkles
- Designed to allow for specializations
- Target Audience
 - Technical writers shying away from the complexity of full DITA
 - ...but not intimidated by XML *per se*
 - Departments cutting down on costs for development and maintenance



XDITA Topics

- One topic type only
- Significantly reduced set of elements and attributes
- `<section>` the only means to organize divisions of content
- Sections cannot be nested
- Content reuse with references to keys and content

```
<?xml version="1.0" encoding="UTF-8"?>
<!DOCTYPE topic PUBLIC "-//OASIS//DTD LIGHTWEIGHT DITA Topic//EN" "lw-topic.dtd"
<topic id="program-bulbs-to-groups">
  <title>Programming Light Bulbs to a Lighting Group</title>
  <shortdesc>You can program one or more light bulbs to a lighting group to operate that group with
    your remote control.</shortdesc>
  <body>
    <section id="content">
      <p>Your <ph keyref="product-name"/> remote control can manage up to 250 network light bulbs on
        the same lighting network. When you add a light bulb to the network, you can program it to
        one or more lighting groups. You must assign a light bulb to at least one lighting group to
        operate that light bulb. A network light bulb that is not programmed to a lighting group will
        still operate when controlling all network light bulbs from the remote control.</p>
    </section>
    <section id="steps">
      <ol>
        <li>
          <p>Make sure your remote control is in range of the light bulbs you are adding.</p>
        </li>
        <li>
          <p>If a network light bulb is new, you must install it by performing the following
            steps:</p>
          <ol>
            <li>
              <p>Make sure power to the fixture where you are installing the light bulb is turned
                OFF.</p>
              <p conref="intro-product.dita#intro-product/warning"/>
            </li>
            <li>
              <p>Remove any existing light bulb from the light fixture.</p>
            </li>
            <li>
              <p>Install the network light bulb into the light fixture as you would any standard
                light bulb.</p>
            </li>
          </ol>
        </li>
      </ol>
    </section>
  </body>
</topic>
```

XDITA topic identifier

Key reference

Content container

Content reference

Content reuse

```
<?xml version="1.0" encoding="UTF-8"?>
<!DOCTYPE topic PUBLIC "-//OASIS//DTD LIGHTWEIGHT DITA Topic//EN" "lw-topic.dtd">
<topic id="program-bulbs-to-groups">
  <title>Programming Light Bulbs to a Lighting Group</title>
  <shortdesc>You can program one or more light bulbs to a lighting group to operate that group with your remote control.</shortdesc>
  <body>
    <section id="context">
      <p>Your <ph keyref="product-name"/> remote control can manage up to 250 network light bulbs on the same lighting network. When you add a light bulb to the network, you can program it to one or more lighting groups. You must assign a light bulb to at least one lighting group to operate that light bulb. A network light bulb that is not programmed to a lighting group will still operate when controlling all network light bulbs from the remote control.</p>
    </section>
    <section id="steps">
      <ol>
        <li>
          <p>Make sure your remote control is in range of the light bulbs you are adding.</p>
        </li>
        <li>
          <p>If a network light bulb is new, you must install it by performing the following steps:</p>
          <ol>
            <li>
              <p>Make sure power to the fixture where you are installing the light bulb is turned OFF.</p>
              <p <conref="intro-product.dita#intro-product/warning"/></p>
            </li>
          </ol>
        </li>
      </ol>
    </section>
  </body>
</topic>
```

program-bulbs-to-groups.dita

```
<?xml version="1.0" encoding="UTF-8"?>
<!DOCTYPE map PUBLIC "-//OASIS//DTD LIGHTWEIGHT DITA Map//EN" "lw-map.dtd">
<map id="rlnmap">
  <topicmeta>
    <navtitle>Remote Lighting Network</navtitle>
  </topicmeta>
  <keydef keys="product-name">
    <topicmeta>
      <linktext>Remote Lighting Network</linktext>
    </topicmeta>
  </keydef>
  <topicref href="y:dita/intro-product.dita" format="dita"/>
  <topicref href="y:dita/remote-components.md" format="mdita"/>
</map>

<?xml version="1.0" encoding="UTF-8"?>
<!DOCTYPE topic PUBLIC "-//OASIS//DTD LIGHTWEIGHT DITA Topic//EN" "lw-topic.dtd">
<topic id="intro-product">
  <title><ph keyref="product-name"/> Overview</title>
  <shortdesc>The <ph keyref="product-name"/> kit allows you to operate network-based home lighting [1 line]
  <body>
    <p>The <ph keyref="product-name"/> kit includes a wireless smart lighting system that helps make [2 lines]
    <dl> [13 lines]
    <fig>
      <title><ph keyref="product-name"/> ready for installation</title>
      <image href="../images/kit.png">
        <alt>Remote Lighting Kit</alt>
      </image>
    </fig>
  </body>
  <p id="warning">Electrical hazards can cause burns, shocks and electrocution (death).</p>
</topic>
```

remotelighting.ditamap

multiple references to the same key

intro-product.dita

key reference

content reference

HDITA

- HTML5-based authoring format
- Custom data attributes allow for content reuse and DITA compatibility
- Target Audience
 - Bloggers and developers comfortable with HTML
 - DocOps integrating HTML-based documentation artifacts



HDITA Topics

- `<article>` and `<section>` work fine for organizing content
- Content reuse
 - `@data-keyref` for referencing keys
 - `@data-conref` for referencing content

```
<!DOCTYPE html>
<html>
  <head>
    <meta charset="UTF-8">
    <title>Considerations for Planning Your Lighting Network</title>
  </head>
  <body>
    <article id="considerations">
      <h1>Considerations for Planning Your Lighting Network</h1>
      <p>Before installing your 

Key reference



Content reference


```

Content reuse with HDITA

```
<!DOCTYPE html>
<html>
  <head>
    <meta charset="UTF-8">
    <title>Considerations for Planning Your Lighting Network</title>
  </head>
  <body>
    <article id="considerations">
      <h1>Considerations for Planning Your Lighting Network</h1>
      <p>Before installing your 
```

Considerations for Planning Your Lighting Network

Before installing your Remote Lighting Network, you should plan how you want your lighting network to behave.

Whether you have only one wireless light bulb or you are replacing your entire home with wireless light bulbs, you should plan how you want the lighting on your network to behave.

Example

- If you only have one light bulb, you might want to place it in a central location that would be optimum for turning on and off when you are away or arrive home.
- If you have multiple light bulbs, you might want to set them up in rooms and lighting groups to be able to better manage them across your home.

Electrical hazards can cause burns, shocks and electrocution (death).

MDITA

- Markdown authoring format
- Comes in two “profiles”
 - Core profile (corresponds mostly to “GHM”, GitHub-flavored Markdown^[7])
 - Extended profile (include advanced features for better DITA interoperability)
- Target Audience
 - Developers who contribute to documentation with no XML editor at hand
 - External contributors who quickly author content for later inclusion
 - Writers on mobile devices that have no direct XML support
 - DocOps integrating Markdown content for processing in a DITA/LwDITA toolchain



MDITA Core Profile

- Supports common Markdown features
 - Titles
 - Ordered and unordered lists
 - Tables
 - Code blocks
 - Formatted text
- Mostly aligns with GitHub Flavored Markdown (“GHM”)
- Automatic ID generation from text of headings

```
# Installing and Setting up Remote Lighting
```

```
Installation of [product-name] includes installing the light bulbs into light fixtures,  
preparing the remote control, and programming lighting groups.
```

```
## Steps
```

1. Install light bulbs.
2. Prepare remote control.
3. Program lighting groups.

```
## Example
```

```
! [Remote Control] (../images/remote-control-callouts.png)
```

Key reference

Image reference

MDITA Extended Profile

- Optional YAML header e.g. to explicitly set an @id value or provide author information
- Markdown features not present in the core profile
 - Definition lists
 - Footnotes
- HDITA snippets going beyond Markdown syntax to:
 - Define keys
 - Define link text
 - Subscript and superscript text

```
---
id: install-and-setup
author: Kevin Lewis
---
```

YAML header

```
# Installing and Setting up Remote Lighting
```

Key reference

```
Installation of your [product-name] includes installing the light bulbs into light fixtures,
preparing the remote control, and programming lighting groups.
```

```
Before you attempt to install your lighting kit, please turn off the power in your electrical
circuit panel.
```

```
## Important Terms
```

```
Circuit panel
: Also known as the breaker panel, it represents the main point of distribution circuits
in a building.
```

```
Lighting Kit[^1]
: The commercial product covered by this information material.
```

Footnote

```
[^1]:
This document occasionally uses the term "lighting kit" (all lowercase letters) for generic
statements that do not apply exclusively to your product.
```

```
## Example
```

```
The following video demonstrates a recommended installation:
```

```
<video src="remote.mp4" controls poster="../images/remote-control-callouts.png" />
```

Video reference

Definition list

Applications



Readme

Integrate

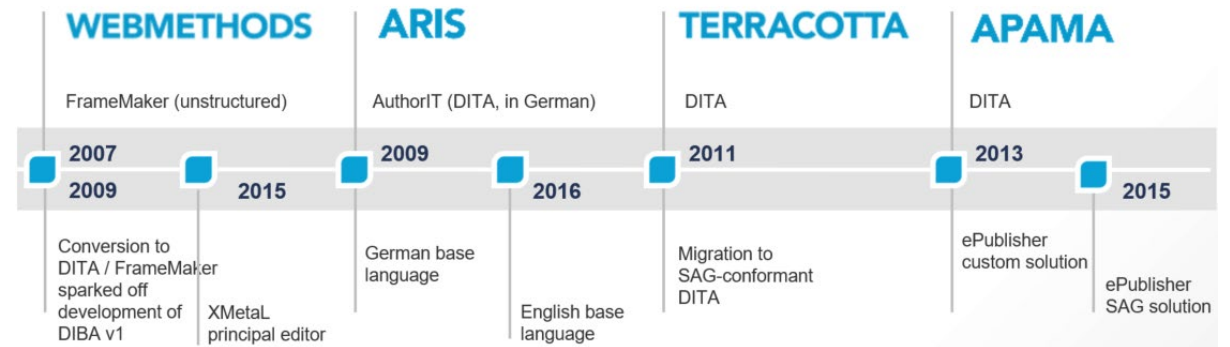
Review & Validate

Why LwDITA Applications at Software AG?

- Software AG expands over time by mergers and acquisitions
 - Raising the recurring question: integrate or merge “foreign” documentation?
 - If there is no direct migration path to DITA, we try to integrate foreign documentation artifacts
- In-house developer affinity for lightweight documentation formats
 - Git platforms foster adaption of Markdown
 - Internal move from other repositories to Git across RnD
 - Integrate developer-(co-)authored markdown into publication process

ACQUISITIONS

DOCUMENTATION INTEGRATION CHALLENGES



README Files

- In the past, README files have been delivered in text format or as PDF
- Also, source formats varied: XML, ASCII, HTML, MS Word
- We want to encourage responsible developers to more actively engage in the README writing process
- This means... a GitHub-based procedure:
We write in Markdown, we deliver HTML

October 2021

This file contains important information you must read before using webMethods Task Engine 10.7. You can find system requirements, user documentation, and installation and upgrade instructions on the [Documentation website] (<https://documentation.softwareag.com/>) or the [TECHcommunity website] (<https://techcommunity.softwareag.com/>). At those locations, you can also find suite-related security and globalization information.

Included in this file is information about functionality that has been added, removed, deprecated, or changed for this product. Deprecated functionality continues to work and is supported by Software AG, but may be removed in a future release. Software AG recommends against using deprecated functionality in new projects.

[1.0 Critical Information

[2] (#critical-information)] (#critical-information)

[2.0 Known Issues [2] (#known-issues)] (#known-issues)

[3.0 Usage Notes [2] (#_Toc3373288)] (#_Toc3373288)

[4.0 Fixes Included in Each Release

[3] (#fixes-included-in-each-release)] (#fixes-included-in-each-release)

[5.0 Other Resolved Issues

[9] (#other-resolved-issues)] (#other-resolved-issues)

[6.0 Documentation Changes

[11] (#documentation-changes)] (#documentation-changes)

[7.0 Terminology Changes

[11] (#terminology-changes)] (#terminology-changes)

[8.0 Added, Removed, Deprecated, or Changed Items

[11] (#added-removed-deprecated-or-changed-items)] (#added-removed-deprecated-or-changed-items)

Integrate Documentation Delivered as HTML

Use Case: HTML documentation generated by Author-IT

- External documentation contributors sometimes deliver HTML sets as only viable choice
- Practical or economical reasons may prevent a clear migration path to full DITA
- In the past, we handled this by processing that data as “legacy” HTML in a non-DITA XML environment (e. g. Adobe RoboHelp 8 HTML output^[8])
- Proof of concept using HDITA instead...

```
<!DOCTYPE html>
<html>
  <title>Installation</title>
  <article id="installation">
    <h1>Installation</h1>
    <p>Adabas Audit Data Viewer's installation package is provided as a WAR file which should be installed in a Java Application Server.</p>
    <p>The tool was tested on web browsers: Chrome 72.0+, Firefox 60.0+, IE 77.0+, Safari 12.0+.</p>
    <p>To ensure the proper and secure usage of AAV it is very important to follow also the installation and configuration instructions of chosen Java Application Server. The Java Application Server shall be installed, configured and operated only by qualified system administrator.</p>
    <p>The configuration of secure TLS communication is recommended, but is not a part of this documentation. For that please refer to the instruction corresponding to chosen Java Application Server.</p>
    <section id="installation_requirements">
      <h2>Installation requirements</h2>
      <p>The following components have to be installed:</p>
      <ul>
        <li>JDK (Java Development Kit) or JRE (Java Runtime Environment),</li>
        <li>Java Application Server.</li>
      </ul>
    </section>
    <section id="installation_processor">
      <h2>Installation process</h2>
      <p>AAV installation package consist of two parts:</p>
      <ul>
        <li>WAR file that contains the AAV backend application, which must be deployed on Java Application Server,</li>
        <li>Web application, that contains static files and can be deployed on any web server (including Java Application Server).</li>
      </ul>
    </section>
  </article>
</html>
```

Integrate Documentation Delivered as HTML

Original HTML documentation generated by Author-IT

Adabas Audit Data Viewer Guide

Contents | Index | Search

++ -

Welcome
Introduction
Installation
Login
User Profile
Layouts
Logs Searching
Scheduled reports
Error Messages
Third Party Software

Installation

Adabas Audit Data Viewer's installation package is provided as a WAR file which should be installed in a Java Application Server.

The tool was tested on web browsers: Chrome 72.0+, Firefox 60.0+, IE 77.0+, Safari 12.0+.

To ensure the proper and secure usage of AAV it is very important to follow also the installation and configuration instructions of chosen Java Application Server. The Java Application Server shall be installed, configured and operated only by qualified system administrator.

The configuration of secure TLS communication is recommended, but is not a part of this documentation. For that please refer to the instruction corresponding to chosen Java Application Server.

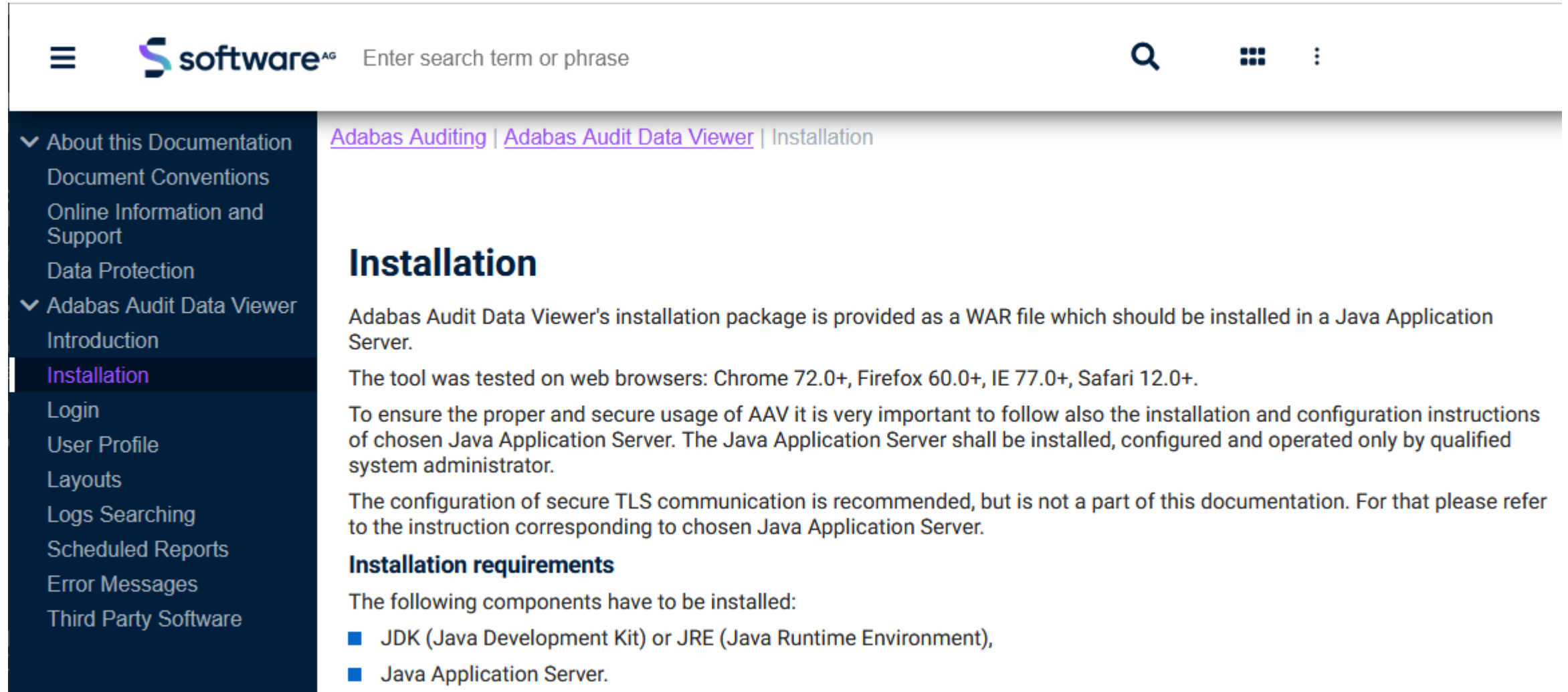
Installation requirements

The following components have to be installed:

- JDK (Java Development Kit) or JRE (Java Runtime Environment),
- Java Application Server.

Integrate Documentation Delivered as HTML

Modern WebHelp from full DITA and HDITA sources generated by WebWorks ePublisher



The screenshot shows a web help page with a dark blue sidebar on the left and a main content area on the right. The sidebar contains a navigation menu with the following items: 'About this Documentation', 'Document Conventions', 'Online Information and Support', 'Data Protection', 'Adabas Audit Data Viewer', 'Introduction', 'Installation' (highlighted in purple), 'Login', 'User Profile', 'Layouts', 'Logs Searching', 'Scheduled Reports', 'Error Messages', and 'Third Party Software'. The main content area has a breadcrumb trail: 'Adabas Auditing | Adabas Audit Data Viewer | Installation'. Below the breadcrumb is the title 'Installation' in a large, bold font. The text below the title describes the installation process, mentioning that the package is a WAR file for a Java Application Server, tested on various web browsers, and requires a qualified system administrator. It also notes that secure TLS communication is recommended but not covered in this documentation. A section titled 'Installation requirements' lists two items: 'JDK (Java Development Kit) or JRE (Java Runtime Environment)' and 'Java Application Server'.

software^{AG} Enter search term or phrase

Adabas Auditing | Adabas Audit Data Viewer | Installation

Installation

Adabas Audit Data Viewer's installation package is provided as a WAR file which should be installed in a Java Application Server.

The tool was tested on web browsers: Chrome 72.0+, Firefox 60.0+, IE 77.0+, Safari 12.0+.

To ensure the proper and secure usage of AAV it is very important to follow also the installation and configuration instructions of chosen Java Application Server. The Java Application Server shall be installed, configured and operated only by qualified system administrator.

The configuration of secure TLS communication is recommended, but is not a part of this documentation. For that please refer to the instruction corresponding to chosen Java Application Server.

Installation requirements

The following components have to be installed:

- JDK (Java Development Kit) or JRE (Java Runtime Environment),
- Java Application Server.

Review and Validate Documentation

Using a docs-as-code approach

- Replace reviews based on HTML snapshots and annotated PDFs
- Proof of concept 2023 at an internal hackathon
- For every PR of DITA documentation stored in GitHub:
 - Establish a review process based on Markdown
 - Validate the DITA files
 - Check text against business rules and style guide
 - Publish HTML output to GitHub Pages



Filter changed files

- _package_registry_help_reverb.dita
- co-online-start-page.dita
- co-trusted_packages.dita
- co-types_of_package_repos.dita
- co-what_is_package_registry.dita
- markdown
 - co-online-start-page.md
 - co-trusted_packages.md
 - co-types_of_package_repos.md
 - co-what_is_package_registry.md
 - ta-accessing_the_sag_repo_wit...
 - ta-config_email_notifications.md
 - ta-download_package.md
 - ta-self_host_package_registry....
- ta-accessing_the_sag_repo_with_wp...
- ta-config_email_notifications.dita
- ta-download_package.dita
- ta-self_host_package_registry.dita

22 co-what_is_package_registry.dita

```
37 37 </concept>
```

4 markdown/co-online-start-page.md

```

... @@ -1,6 +1,8 @@
1 1 # webMethods Package Registry Help {#concept_6868590AF01B48CBB1D24B5D7B4B87F5
   .concept}
2 2
3 - This help explains how to use the webMethods Package Registry to access packages on
   the official Software AG package registry, and access and share packages over other
   public and private registries that contain webMethods Integration Server packages.
4 + &lt;&lt;FOR REVIEW&gt;&gt;
5 +
6 + This help explains how you can use the webMethods Package Registry web portal to
   browse and install modules that can enhance your webMethods.io Integration
   projects.
7 - **[Document Conventions](x_global_reuse/re-document_conventions.md)**
8

```

2 markdown/co-trusted_packages.md

```

... @@ -1,4 +1,6 @@
1 1 # Trusted Packages {#co-trusted_packages .concept}
2 2
3 + &lt;&lt;FOR REVIEW&gt;&gt;
4 +

```


Validation ongoing

Summary

Jobs

- ✓ Init
- ✓ Render the updated markdown
- ✓ Build the docs with DITA
- ✓ **Validate the docs against Sche...** ↻
- ✓ Validate the docs with Vale
- ⌚ Deploy docs to Pages
- ✓ Status

Run details

Workflow file

Validate the docs against Schematron rules

succeeded 3 hours ago in 17s

Search logs




- > ✓ Set up job 1s
- > ✓ Set up runner 0s
- > ✓ Run actions/checkout@v3 1s
- > ✓ Run actions/setup-node@v3 5s
- > ✓ Install node-schematron 4s
- ▼ ✓ **Run the Schematron validation** 1s

```
1 ▼ Run node-schematron sag-dita1.sch "**/*.dita" --ok &> schematron_report.txt
2   node-schematron sag-dita1.sch "**/*.dita" --ok &> schematron_report.txt
3   input_file=schematron_report.txt
4   # Extract relevant information and format Markdown lists
5   awk '/^info [0-9]+ documents (passed|failed)/ {status = status "-" $0 "\n"; next}
6     /^pass/ {gsub(/\033\[34;1m|\033\[0m/, "", $0); files = files "-" $2 "\n"; current_file = $2;
7     next}
8     /^rpvt/ {gsub(/\033\[34;1m|\033\[0m/, "", $0); if (current_file != "") files = files " - ⚠️ "
9     substr($0, index($0, $3)) "\n"}
10    /^info 0 documents could not be validated/ {status = status "-" $0 "\n"}
11    END {print "## Status\n" status "\n<details><summary>Files</summary>\n\n" files "\n</details>"}'
12 $input_file > output.md >> $GITHUB_STEP_SUMMARY
13 shell: /usr/bin/bash -e {0}
```

Validation ongoing

🏠 Summary

Jobs

- ✓ Init
- ✓ Render the updated markdown
- ✓ Build the docs with DITA
- ✓ Validate the docs against Sche...
- ✓ **Validate the docs with Vale** 
- 🕒 Deploy docs to Pages
- ✓ Status

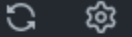
Run details

📄 Workflow file

Validate the docs with Vale

succeeded 3 hours ago in 5s

🔍 Search logs



✓ Validate docs with Vale 0s

```
29
30 markdown/re-listing_package_versions.md
31 3:15 suggestion 'REST' has no definition.      vale-rules.Acronyms
32 3:144 suggestion 'are marked' looks like      vale-rules.Passive
33         passive voice.
34
35
36 markdown/x_global_reuse/re-document_conventions.md
37 22:2 warning In general, don't use an          vale-rules.Ellipses
38         ellipsis.
39 22:34 suggestion Consider using 'many' instead  vale-rules.ComplexWords
40         of 'multiple'.
41 22:123 warning In general, don't use an          vale-rules.Ellipses
42         ellipsis.
43
44
45 markdown/ta-self_host_package_registry.md
46 3:9 suggestion 'FOR' has no definition.      vale-rules.Acronyms
47
```

LwDITA Application Wrap-up

Use Case	LwDITA/M↓ Application	Status
README	Markdown as source format	Living process
Integrate original HTML sets	HDITA as intermediate format	Proof of concept
Review and validate (Lw)DITA sets	Transient Markdown for collaboration	Field test ahead

State of Affairs

Do not wait... engage!

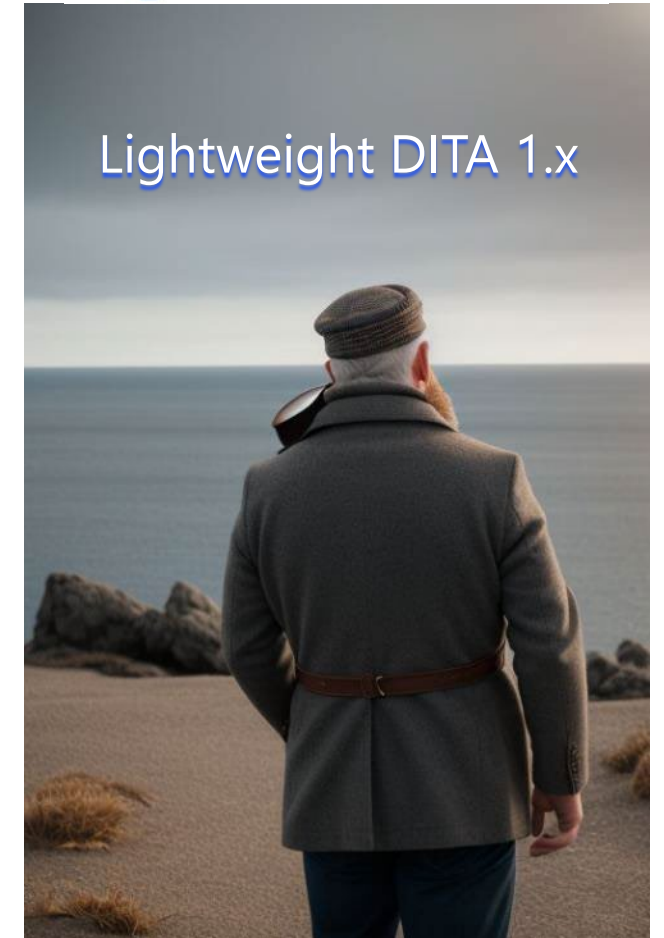
- There is progress in the committee work, but not enough
- Results and decisions from previous months trickle into new spec drafts and smaller changes to the LwDITA XDITA DTD
- For orientation, read the OASIS LwDITA committee note^[4], if you haven't yet done so
- Think about sending someone over to the Lightweight DITA SC, we're too small
- Contribute with bug alerts and, ideally, bug fixes for the DITA-OT plugin^[9]
- We want to finish this...



LwDITA in a Fractured Markdown Environment

Discussion

- LwDITA 1.0 consolidates on current features, not picking up any new ones
- Act as a least common denominator, with OASIS blessing
- Beyond 1.0, we'll take a careful look at features, most requested and used in current practice
- LwDITA will presumably never act as *the* standard for Markdown



References

- [1] DAY, D. (2011, April 4): *Consideration of a profile for modest needs*. Retrieved from <https://wiki.oasis-open.org/dita/LimitedDitaProfile/>.
- [2] PRIESTLEY, M. (2013, April 16): *Lightweight DITA. A preview of the proposed DITA 1.3 feature*. Retrieved from <https://www.slideshare.net/mpriestley/lw-dita20130424/>.
- [3] OASIS LIGHTWEIGHT DITA SUBCOMMITTEE (2014, September 15). Conference Call. Last retrieved from https://www.oasis-open.org/apps/org/workgroup/dita-lightweight-dita/event.php?event_id=38311. Currently not available.
- [4] EVIA, C. ET AL. (eds.): *Lightweight DITA: An Introduction Version 1.0* (2018, October 30). Committee Note 02. Retrieved from <http://docs.oasis-open.org/dita/LwDITA/v1.0/LwDITA-v1.0.html>.
- [5] EVIA, C.: *Creating Intelligent Content with Lightweight DITA* (2019). New York, NY: Routledge, 2019. ATTW Series in Technical and Professional Communication.
- [6] DOHERTY, S.: *Lightweight DITA Testing* (2022, April). Retrieved from <https://github.com/StanDoherty/LightweightDITATesting/>.
- [7] GITHUB: *GitHub Flavored Markdown Spec* (2019, April 6). Version 0.29-gfm. Retrieved from <https://github.github.com/gfm/>.
- [8] WEGMANN, F.: *Becoming a Safe Harbor for Your Data Immigrants* (2019, November 8). At: CIDM : 15th DITA Europe Conference. Brussels : Crowne Plaze. Abstract retrieved from <https://ditaeuropa.infomanagementcenter.com/2019-agenda-day-2/Wegmann/>.
- [9] ELOVIRTA, J. (2024, January 4): *Lightweight DITA for DITA-OT*. Version 5.7.0. Retrieved from <https://github.com/jelovirt/org.lwdita/>.
- [10] MACFARLANE, J.: *CommonMark Spec* (2024, January 28). Version 0.31.2. Retrieved from <https://spec.commonmark.org/>.

Some images have been generated by GenCraft and at perchance.org, some were taken from the Microsoft 365 image library.
Any prompts for AI-generated images on request.

